

# Recreational Sea Fishing Licences

## FISHWISE FUNDS STATUS AND TRENDS 2021/22

In Tasmania, recreational sea fishing licences are required for fishing high value fish resources (such as rock lobster, abalone and scallops), for equipment (gillnets, beach seine nets, set line) that have a relatively high impact on the resource or the environment, and for fisheries that have high information needs. No licence is required by Aborigines engaged in non-commercial fishing.

As well as providing funds to manage and support recreational fishing, recreational licences provide contact details for communication and research. Funds collected from recreational sea fishing licences are used for core recreational fishery management, communications, and community engagement activities; as well as contributing to the actions outlined in the Recreational Sea Fishing Strategy.

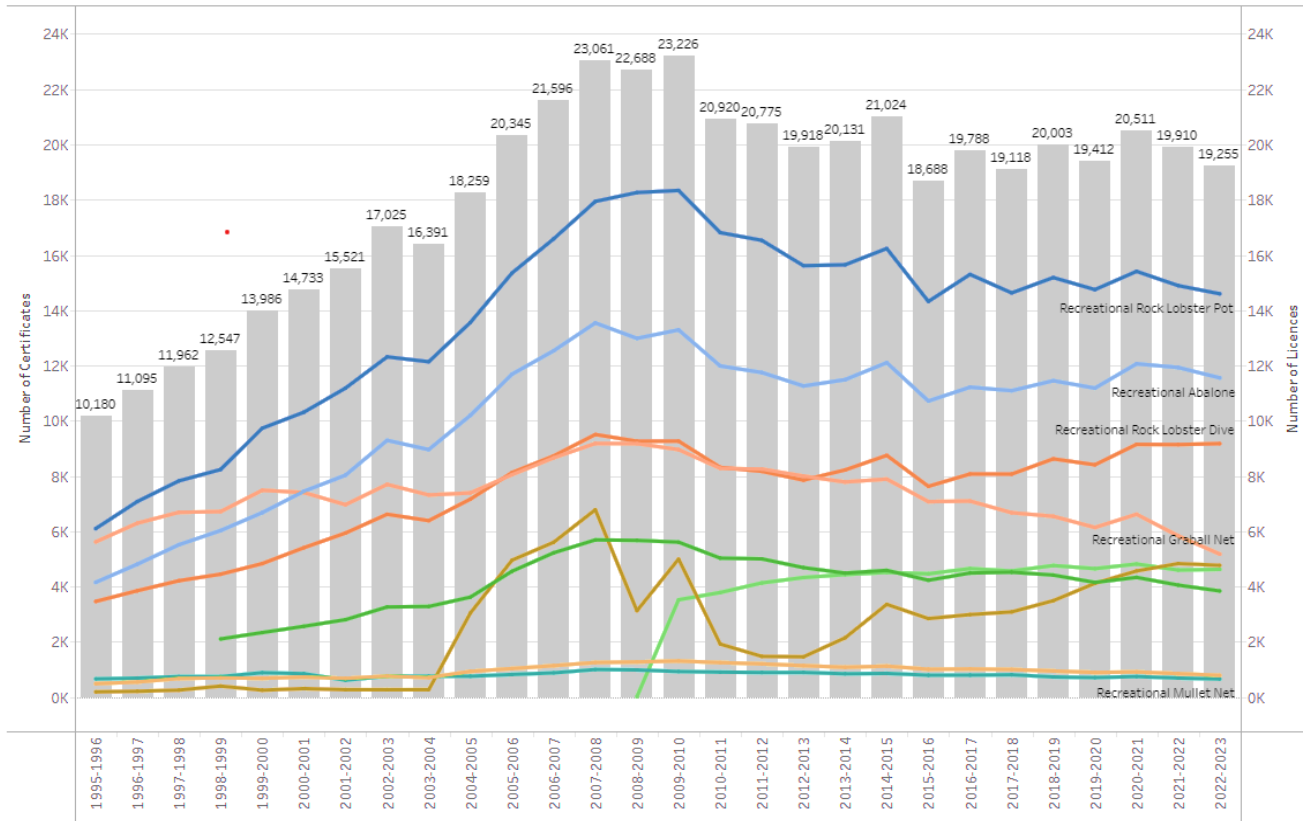
### Licence Trends

- Recreational sea fishing licence holders decreased by ~600 from the previous year to 19,910. Licence numbers still remain relatively low - around 10% less than the average of the previous ten years.
- Rock lobster is the main driver for taking out a licence. There were just under 18,000 fishers who held at least one rock lobster licence. This is almost 20% lower than in 2007/8 - the peak year for licence numbers.

### Total number of individual licence holders and number of licence types

Licence type	Number
Recreational Abalone	11927
Recreational Beach Seine Net	846
Recreational Graball Net	5832
Recreational Mullet Net	686
Recreational Rock Lobster Dive	9137
Recreational Rock Lobster Pot	14889
Recreational Rock Lobster Ring	4050
Recreational Scallop	4829
Recreational Set Line	4595

## Number of Licences by Licence Type over Time



Note 2022/23 is year to date – last updated 28/4/2023

## Fishwise Fund

Revenue from the sale of sea fishing licences supports the *Fishwise* fund.

This pays for recreational fisheries management and activities under the following Programs:

- **Recreational Fisheries Management** – funds core activities for recreational fisheries management including staffing.
- **Licensing and Administration** – funds the costs of the recreational fisheries licensing system, database management, sales and distribution of licences;
- **Communications** – fisheries communication and products including web site, social media, fishing awareness major exhibits, the Recreational Sea Fishing Guide (printed) and phone app, fishing measuring rulers, gauges and brochures.
- **Community Partnerships** – Includes Fish care promotes sustainable recreational fishing practices and an understanding of recreational fishing rules.
- **Resource Management** – Contributes to strategic and research projects including; administration of the Recreational Fisheries Advisory Committee (RecFAC) which provides advice on fisheries management issues and the Tasmanian Recreational Sea Fishing Guide rebuild, which incorporates rock lobster catch monitoring.



## Fishwise Fund Status

- A total of \$1,251 million was collected from the sale of recreational sea fishing licences in the year – an increase of ~\$4,000 from the previous year.
- All licence revenue is retained in the Fishwise Fund to be spent on recreational fisheries, except for \$255,000, which is collected for Consolidated Revenue<sup>1</sup>.
- \$122,000 has remained in the Fishwise fund marked for Fishery adjustment funds. It has been in the fund for the last decade.
- Fishwise revenue is spent on all recreational fisheries and not compartmentalised in a particular licensed fishery.
- All residual Fishwise funds at the end of any financial year remain in the Fishwise special deposit fund.

---

• <sup>1</sup> The \$255,000 contribution for consolidated revenue is part of the initial set up of the fund in 1996. The Government uses consolidated revenue for other activities, which benefit recreational fishing, such as policing, research and funding the Tasmanian Association of Recreational Fishing (TARFish).

